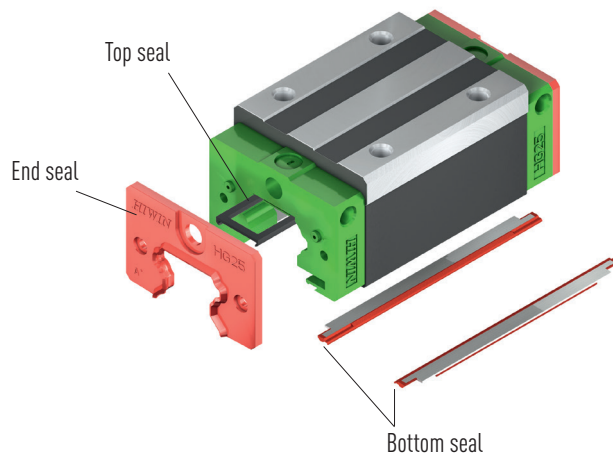


## Assembly Instruction

Sealing Systems SW, ZW, ZWX



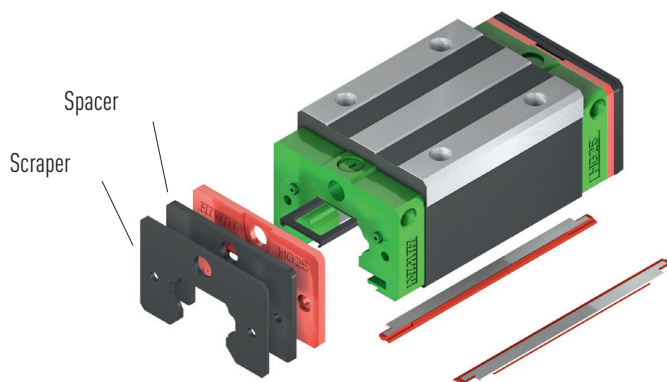
### 1. Sealing systems SW, ZW, ZWX



#### Sealing system SW:

End seal with double sealing lip, optimized bottom seal, additional top seal.

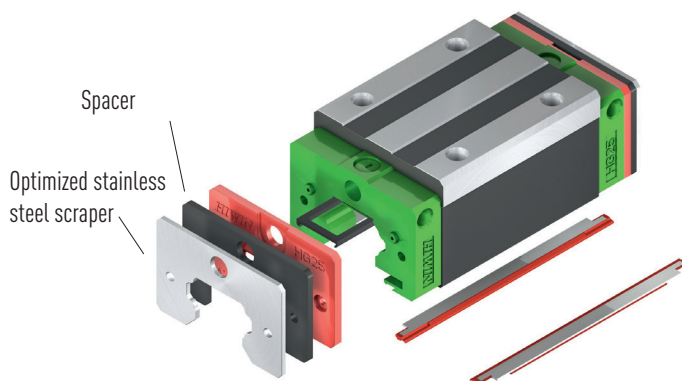
Fig. 1: Exploded view of the sealing system ZWX



#### Sealing system ZW:

End seal with double sealing lip, optimized bottom seal, additional top seal, scraper (air gap approximately 0.4 – 0.5 mm).

Fig. 2: Exploded view of the sealing system ZW



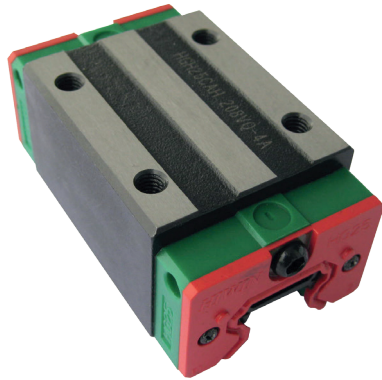
#### Sealing system ZWX:

End seal with double sealing lip, optimized bottom seal, additional top seal, optimized stainless steel scraper (air gap approximately 0.1 – 0.2 mm)

Fig. 3: Exploded view of the sealing system SW

## 2. Extension kit ZWX – parts list

On the following illustrations you see items of the expansion kit ZWX for the HG series, size 25. Depending on the series, the size and the sealing system, a different number of individual components is required. Currently, the additional top seal and the optimized bottom seal are not yet available for all sizes. For these sizes the standard bottom seal has to be used.



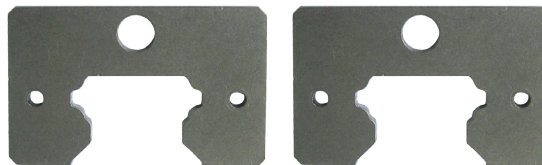
1 × HG block with standard sealing system SS



2 × end seal



2 × spacer



2 × scraper



1 × top seal



2 × bottom seal



2 × washer (large), 4 × washer (small)



4 × screw



1 × lock screw



1 × grease nipple

### 3. Tools needed for assembly



Fig. 4: Needed tools

### 4. Disassembly of the standard seal system

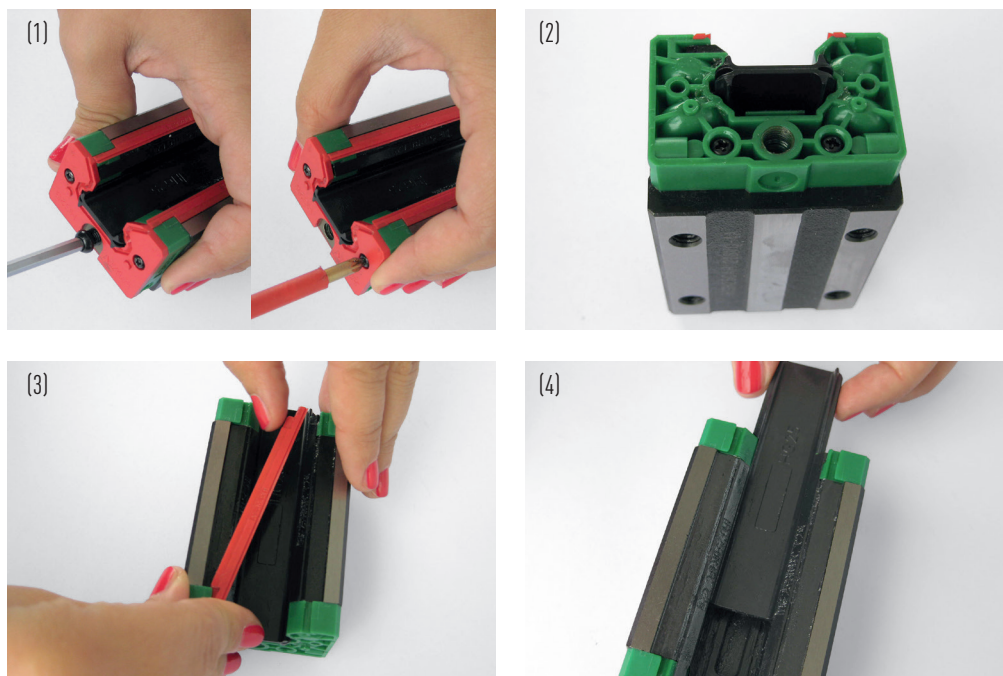


Fig. 5: Removing of the standard sealing system SS

- Disassemble the lock screw on both sides of the block with the Allen key; remove the other screws with the cross tip screwdriver (1)
- Take off the end seals (2)
- Remove the bottom seals on both sides (3)
- Remove the mounting help (4)



## 5. Assembly of the sealing systems SW, ZW und ZWX

**Step 1:** Place the top seal with its smooth side downwards in the block (see also explosion view, page 3).

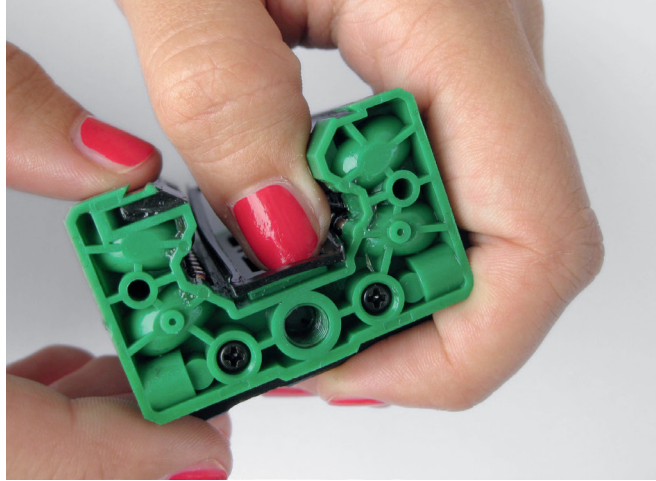


Fig. 6: Placing of the top seal

**Step 2:** First, fit both front ends of the top seal into the provided slots at the open sides of the block, then push them down. The seal has to be flush with the block.

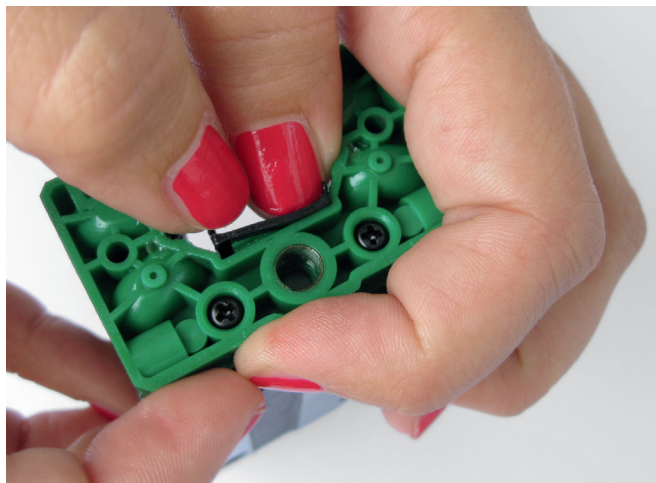


Fig. 7: Positioning of the top seal

**Step 3:** Then use the spatula to press the seal firmly into the provided groove. For this purpose, it is advisable to place the spatula on the small indentation of the seal.

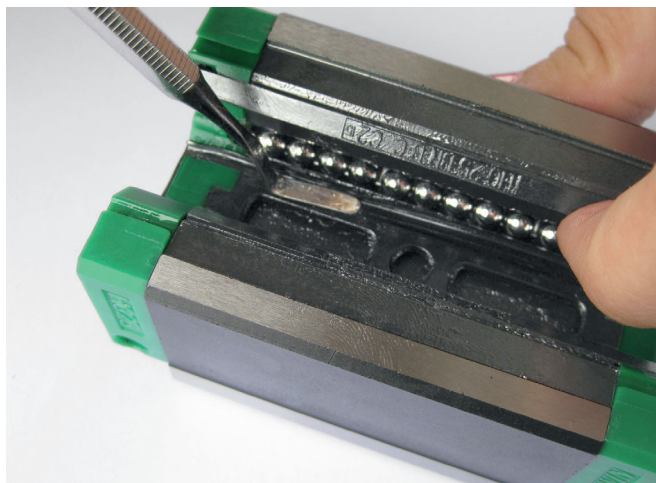


Fig. 8: Pressing down of the top seal

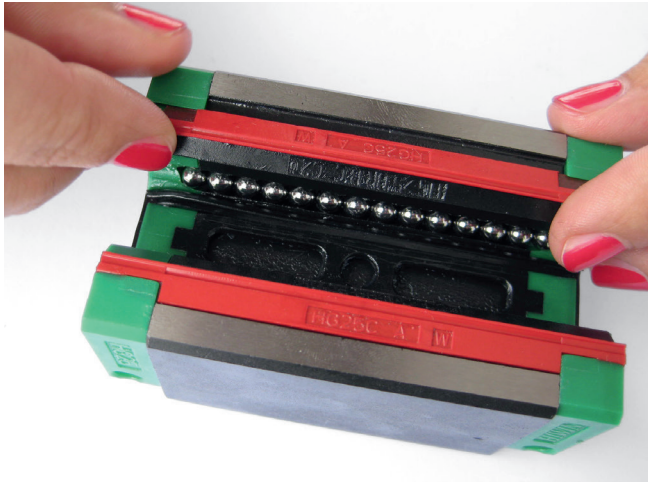


Fig. 9: Fixing of the bottom seals

**Step 4:** Position the bottom seals into the provided groove, so that the writing faces outwards. The sealing lips each are directed towards the inner side of the block.

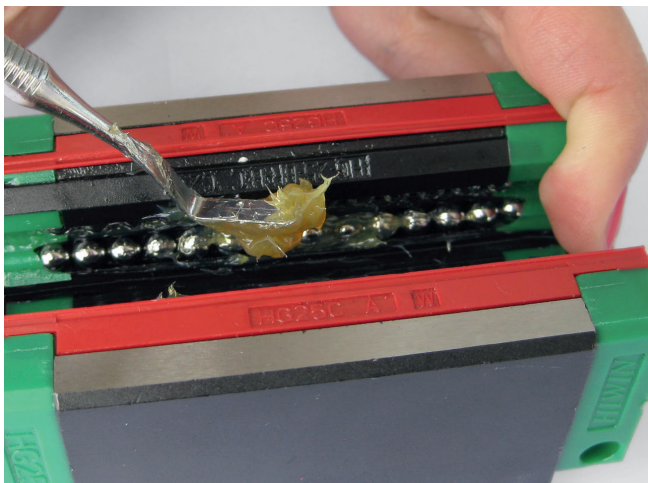


Fig. 10: Lubrication of the balls

**Step 5:** Remove the mounting help and use the spatula to lubricate the balls.

This step is not necessary, if a grease nipple will be mounted later.

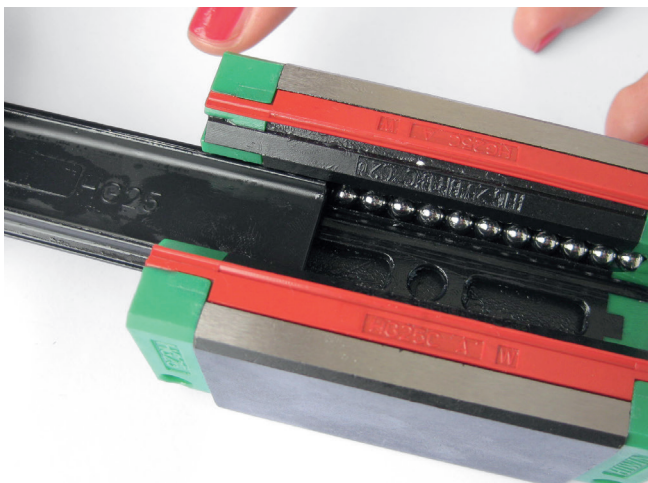


Fig. 11: Reinstalling of the mounting help

**Step 6:** Be careful while putting back the mounting help to prevent balls from falling out of the block.

**Step 7:** Place the end seal on the block.



Fig. 12: Placing of the end seal

**Step 8:** Place one of the big washers and two of the small ones in the given notches.

With the sealing system SW step 8 is omitted.



Fig. 13: Positioning of the washers

**Step 9:** Place the spacer on the block.

With the sealing system SW step 9 is omitted.



Fig. 14: Positioning of the spacer



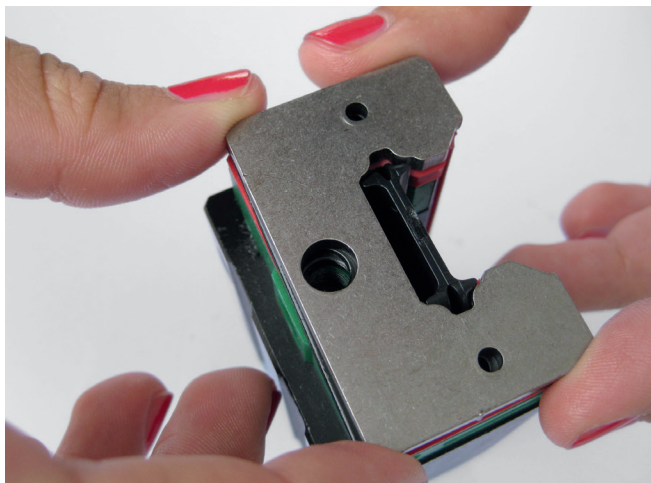


Fig. 15: Positioning of the scraper

**Step 10:** Place the scraper on the block

With the sealing system SW step 10 is omitted.

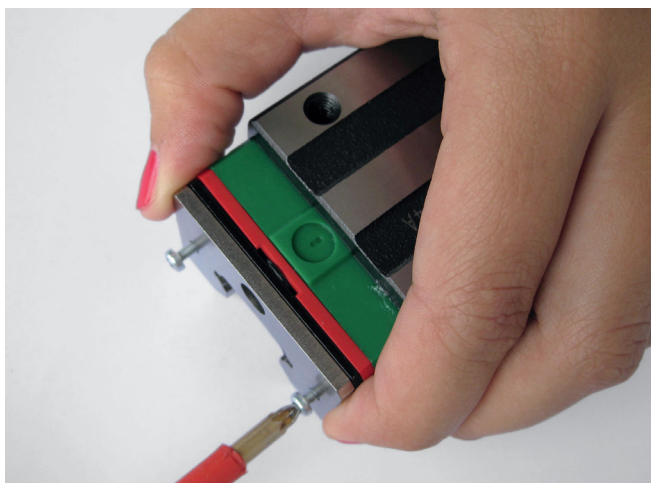


Fig. 16: Slight tightening of the screws

**Step 11:** Fix the complete sealing system with the screws, but be careful NOT to tighten them yet. Otherwise the mounting of the block on the rail will not be possible.

Please repeat steps 6 to 10 on the other side of the block.

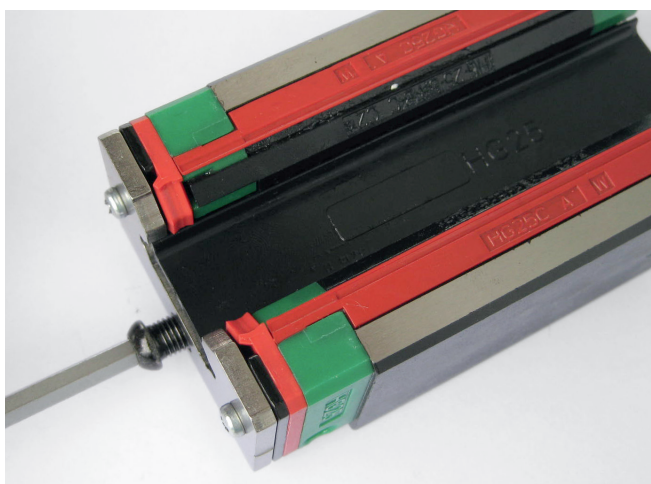


Fig. 17: Slight tightening of the lock screw

**Step 12:** On one side slightly tighten the lock screw

**Step 13:** Take the open-end spanner to preassemble the grease nipple on the other side of the block – again it must not be too tight.

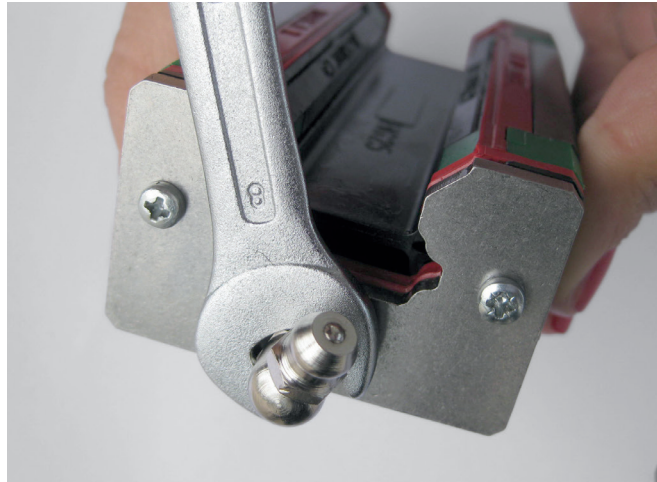


Fig. 18: Preassembling of the grease nipple

**Step 14:** To mount the block onto the rail, first place the block with the mounting help exactly face to face with the rail. Then carefully move the block onto the rail, until it is positioned on the rail completely.

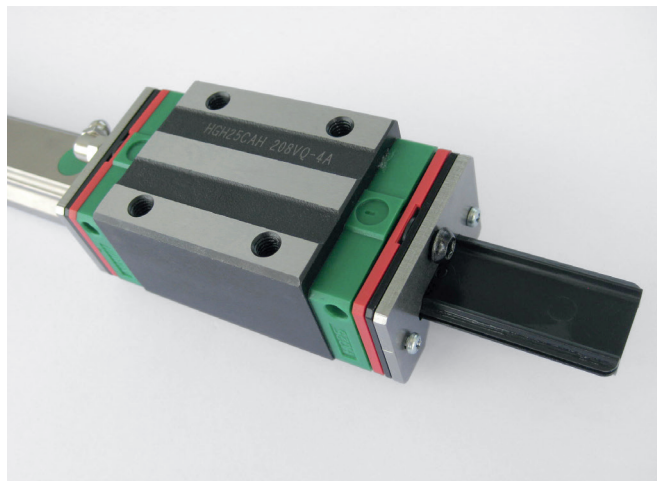


Fig. 19: Moving of the block onto the rail

**Step 15:** Shift the parts of the sealing system until the block runs smoothly and without distractions on the rail. Then tighten the screws, the lock screw and the grease nipple. To tighten the grease nipple, move the block towards the end of the rail, so that it can rotate freely, then tighten it with the open-end spanner. If the block has not been lubricated in step 5, lubricate it now with the grease nipple. Move the block a few times back and forth along the rail to make sure that the balls are lubricated evenly.

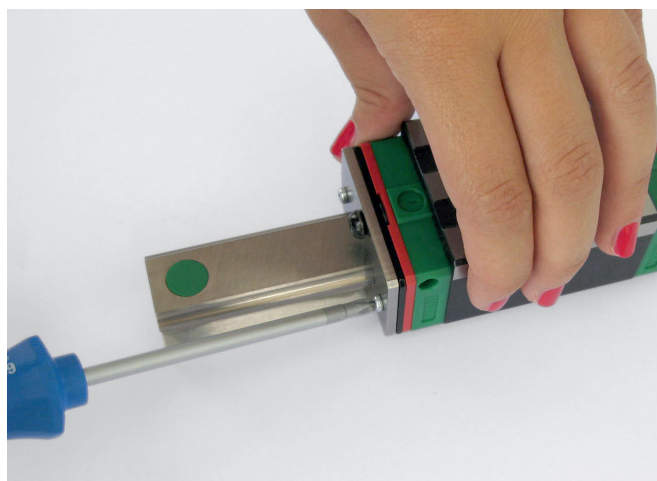


Fig. 20: Tightening of the screws

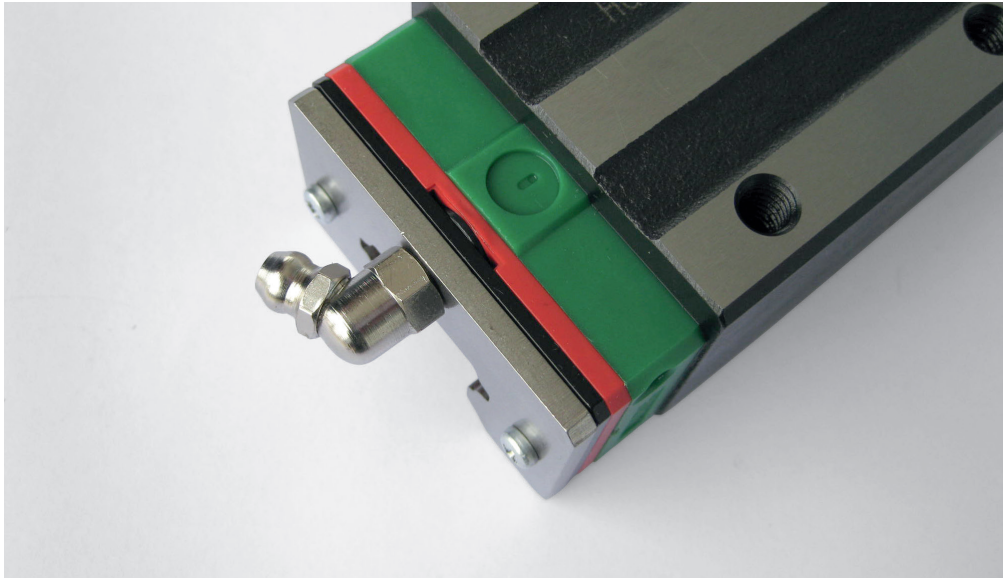
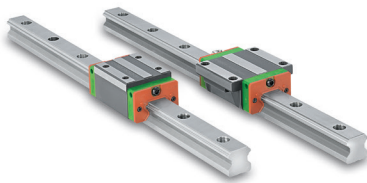


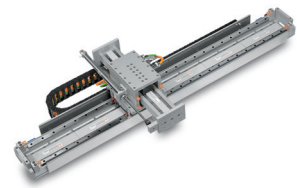
Fig. 21: **Block of the HG series with the completely assembled sealing system ZWX**



Linear Guideways



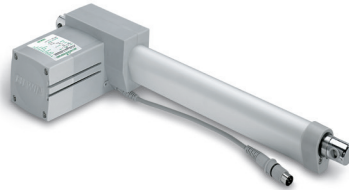
Ballscrews



Linear Motor Systems



Linear Axes with Ballscrews



Linear Actuators



Ball Bearings



Linear Motor Components



Rotary tables



Drives

**HIWIN GmbH**  
 Brücklesbünd 2  
 D-77654 Offenburg  
 Phone +49 (0) 7 81 9 32 78 -0  
 Fax +49 (0) 7 81 9 32 78 -90  
 info@hiwin.de  
 www.hiwin.de

**Vertriebsbüro Osnabrück**  
 Franz-Lenz-Str. 4  
 49084 Osnabrück  
 Phone +49 (0) 5 41 33 06 68 -0  
 Fax +49 (0) 5 41 33 06 68 -29  
 osnabrueck@hiwin.de  
 www.hiwin.de

**Vertriebsbüro Stuttgart**  
 Max-Lang-Straße 56  
 70771 Leinfelden-Echterdingen  
 Phone +49 (0) 7 11 79 47 09 -0  
 Fax +49 (0) 7 11 79 47 09 -29  
 stuttgart@hiwin.de  
 www.hiwin.de

**Verkoopkantoor Nederland**  
 Fellinitaan 53  
 1325 SG Almere  
 Phone +49 (0) 7 81 9 32 78 -0  
 Fax +49 (0) 7 81 9 32 78 -90  
 info@hiwin.nl  
 www.hiwin.nl

**Biuro dystrybucji Warszawa**  
 ul. Putawska 405a  
 PL-02-801 Warszawa  
 Phone +48 (0) 22 544 07 07  
 Fax +48 (0) 22 544 07 08  
 info@hiwin.pl  
 www.hiwin.pl

**Értékesítési Iroda Budapest**  
 Kis Gömb u. 19. Ú/1  
 H-1135 Budapest  
 Phone +36 (06) 1 786 6461  
 Fax +36 (06) 1 789 4786  
 info@hiwin.hu  
 www.hiwin.hu

**HIWIN Srl**  
 Via De Gasperi, 85  
 20017 Rho (MI)  
 Phone +39 (0) 2 93 90 09 41  
 Fax +39 (0) 2 93 46 93 24  
 info@hiwin.it  
 www.hiwin.it

**HIWIN s.r.o.**  
 Medkova 888/11  
 CZ-62700 BRNO  
 Phone +42 05 48 528 238  
 Fax +42 05 48 220 223  
 info@hiwin.cz  
 www.hiwin.cz

**HIWIN s.r.o., o.z.z.o.**  
 Mládežnícka 2101  
 SK-01701 Považská Bystrica  
 Phone +421 424 43 47 77  
 Fax +421 424 26 23 06  
 info@hiwin.sk  
 www.hiwin.sk

**HIWIN (Schweiz) GmbH**  
 Schachenstrasse 80  
 CH-8645 Jona  
 Phone +41 (0) 55 225 00 25  
 Fax +41 (0) 55 225 00 20  
 info@hiwin.ch  
 www.hiwin.ch

**HIWIN France**  
 24 ZI N 1 Est-BP 78  
 F-61302 L'Aigle Cedex  
 Phone +33 (2) 33 34 11 15  
 Fax +33 (2) 33 34 73 79  
 info@hiwin.fr  
 www.hiwin.fr

**HIWIN Technologies Corp.**  
 No. 7, Jingke Road  
 Nantun District  
 Taichung Precision Machinery Park  
 Taichung 40852, Taiwan  
 Phone +886-4-2359-4510  
 Fax +886-4-2359-4420  
 business@hiwin.com.tw  
 www.hiwin.com.tw

**HIWIN Mikrosystem Corp.**  
 No. 7, Jingke Road  
 Nantun District  
 Taichung Precision Machinery Park  
 Taichung 40852, Taiwan  
 Phone +886-4-2355-0110  
 Fax +886-4-2355-0123  
 business@mail.hiwinmikro.com.tw  
 www.hiwinmikro.com.tw

**HIWIN Corporation**  
 3F, Sannomiya-Chuo Bldg.  
 4-2-20 Goko-Dori, Chuo-Ku  
 Kobe 651-0087, Japan  
 Phone +81-78-262-5413  
 Fax +81-78-262-5686  
 mail@hiwin.co.jp  
 www.hiwin.co.jp

**HIWIN Corporation**  
 Headquarters  
 1400 Madeline Ln.  
 Elgin, IL 60124, USA  
 Phone +1-847-827 2270  
 Fax +1-847-827 2291  
 info@hiwin.com  
 www.hiwin.com